

Baltimore SSO Site Investigation Report

FM Initials: DF

Project Number: 05 Stony Run

Site Name:	05_JGF90I	Monitor Series:	4000	Monitor S/N:	1202	Manhole #:	JGF90		Investigation Information:	
Address / Location:	Wyman Park Drive			Map Page #:	8	Map Grid #:	29 UU			Upstream Input: (L/S, P/S) N/A
				Pipe Height:	24"	Pipe Width:	24"			Upstream Manhole: JGF89
				IP Address:	166.142.224.070					Downstream Manhole: JGF91
Access:	Walk (Residential)			GPS Coords:	N DD.dddd		W DD.dddd			Depth of Flow: 9.75"
					39 19.383		76 37.572		Description of Site Hydraulics:	
Date/Time of Investigation:		March 25, 2003								

No abnormal conditions were observed.

Manhole Information:

Manhole Depth: 14'6"

Manhole Material / Condition:

Active Drop Connections?

No

System Character:

☒ Residential
☐ Commercial
☐ Industrial

Notes:

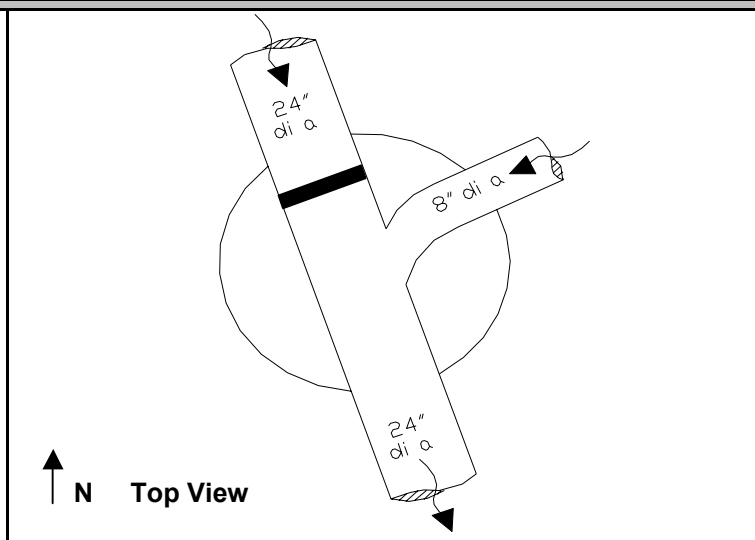
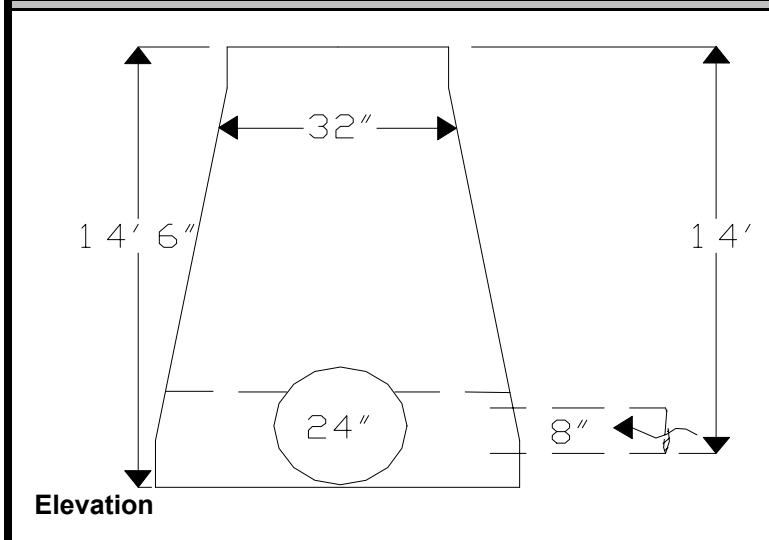
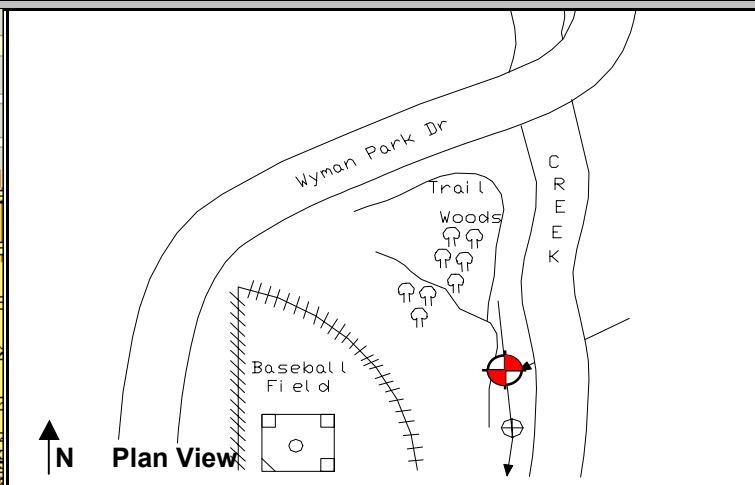
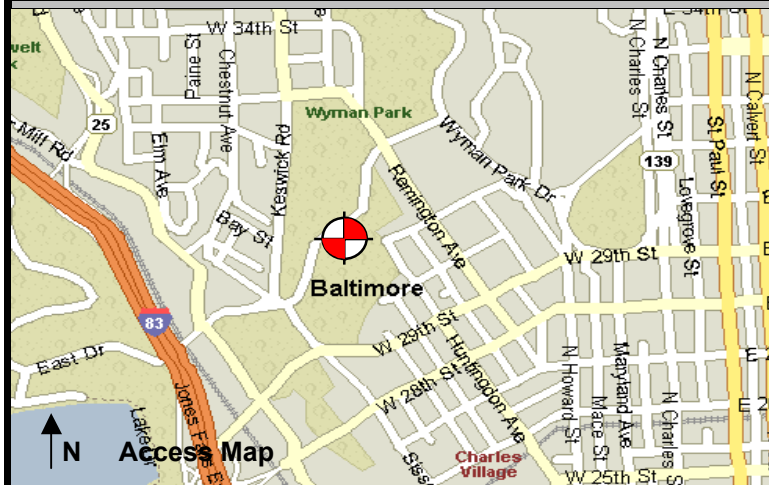
Evidence of infiltration

Legend:

 Cast Iron Flap Valve

 Sensor Location

N.T.S.- Not to scale



The monitoring period ended on October 31, 2004.